



▶ TECHNICAL SPECIFICATIONS

MACH System® – sealed instant coupling of tractor to loader hydraulic and electric lines.



Unrivalled dump speed and optimum crowd angles thanks to a unique asymmetric ram design.

Implement positioning indicator fitted with three markers.



HYDRAULIC COMPENSATION PARALLELOGRAM – PATENTED
Additional power and steady implement angle during raising/lowering of the loader.

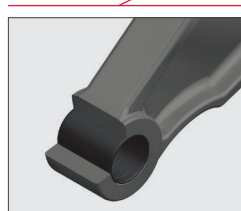


Crowding angle offering maximum efficiency.



Fully protected parking stands integrated into the loader arms. The lift height remains the same.

Heavy-duty wear bushes designed for intensive use.



Euro or MX implement carrier with automatic locking and conveniently positioned release lever.

▶ PERFORMANCE

10 modern clean design models, providing the ultimate performance, productivity and comfort

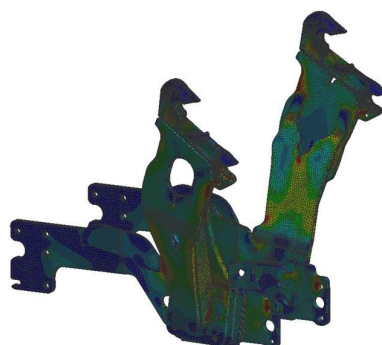


T406

T408

T408+

TRACTOR	TRACTOR POWER (hp)	60 - 90 hp	80 - 120 hp	80 - 120 hp
	NUMBER OF CYLINDERS	3 - 4 cyl	4 cyl	4 cyl
	MAX FRONT TYRES (4WD)	13-6 R24	14-9 R24	14-9 R24
	WEIGHT	5 300 kg	5 500 kg	5 500 kg
	LIFT HEIGHTS			
	Maximum height at implement pivot*	3,75 m	3,85 m	3,85 m
	Max. height under horizontal bucket ^①	3,50 m	3,60 m	3,60 m
	Max. height under dumped bucket# ^②	2,95 m	3,05 m	3,05 m
	WORKING ANGLES			
	Dumping angle at full height# ^③	52°	55°	55°
Crowding angle on the ground#	47°	52°	52°	
DIGGING DEPTH ^⑤	0,20 m	0,20 m	0,20 m	
LIFTING FORCE AT IMPLEMENT PIVOT AXIS*	1990 kg	2410 kg	2840 kg	
CAPACITY AT IMPLEMENT PIVOT AXIS OVER ENTIRE LIFTING RANGE*	1560 kg	2070 kg	2440 kg	
PAYLOAD** AT 800 MM FROM IMPLEMENT PIVOT AXIS (KG)				
On the ground:	1615 kg	2230 kg	2495 kg	
2 m above ground:	1490 kg	2010 kg	2390 kg	
3 m above ground:	1380 kg	1905 kg	2275 kg	
At max. height:	1350 kg	1890 kg	2180 kg	
LIFTING TIME	3,6s	4,3s	5s	
DUMPING TIME	0,6s	0,9s	0,9s	
WEIGHT WITHOUT EQUIPMENT	480 kg	526 kg	531 kg	



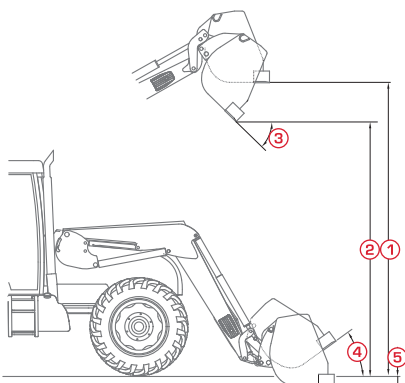
BRACKET DESIGN - REAL EXPERTISE

The bracket head is fitted with a guide ramp to make hitching operations easier. Its design ensures accessibility from all tractor maintenance points.



T410 T410+ T412 T412+ T414 T417 T418

90 - 140 hp	90 - 140 hp	100 - 180 hp	100 - 180 hp	120 - 230 hp	150 - 300 hp	150 - 300 hp
4 - 6 cyl	4 - 6 cyl	4 - 6 cyl	4 - 6 cyl	4 - 6 cyl	6 cyl	6 cyl
14-9 R28	14-9 R28	16-9 R28	16-9 R28	16-9 R30	16-9 R30	16-9 R30
8 500 kg	8 500 kg	9 500 kg	9 500 kg	11 500 kg	11 500 kg	11 500 kg
4,00 m	4,00 m	4,15 m	4,15 m	4,50 m	4,60 m	4,60 m
3,75 m	3,75 m	3,90 m	3,90 m	4,25 m	4,35 m	4,35 m
3,20 m	3,20 m	3,35 m	3,35 m	3,70 m	3,80 m	3,80 m
55°	55°	55°	55°	50°	50°	50°
52°	52°	52°	52°	52°	51°	51°
0,20 m	0,20 m	0,20 m	0,20 m	0,20 m	0,20 m	0,20 m
2590 kg	3010 kg	2840 kg	3270 kg	2670 kg	3420 kg	3420 kg
2220 kg	2590 kg	2420 kg	2780 kg	2210 kg	2910 kg	2910 kg
2345 kg	2750 kg	2650 kg	3075 kg	2490 kg	3230 kg	3230 kg
2125 kg	2490 kg	2395 kg	2780 kg	2230 kg	2950 kg	2950 kg
2015 kg	2365 kg	2265 kg	2635 kg	2150 kg	2795 kg	2795 kg
2010 kg	2345 kg	2225 kg	2535 kg	2100 kg	2735 kg	2735 kg
5,1s	5,8s	5,8s	6,6s	6s	7,8s	7,8s
0,9s	1,2s	1,2s	1,2s	1,1s	1,2s	1,2s
573 kg	583 kg	598 kg	603 kg	716 kg	782/819kg	782/819kg



Specifications determined at a pressure of 195 bar and a flow rate of 60 litres/min.
Data may vary depending on the type of tractor being equipped.

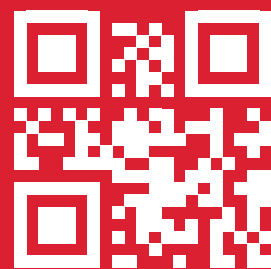
* Payloads only. The figures at ground level and at the implement pivot axis are not to be used / lift force and capacity at the pivot axis are calculated without implements hitched to the loader

** Payload is calculated with a 180 kg implement

Figures provided for an earth bucket



MX 
part of M-extend



www.m-x.eu



© MX, part of M-extend 2024